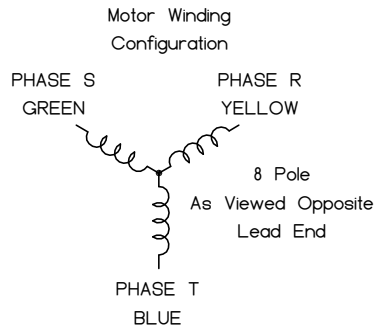
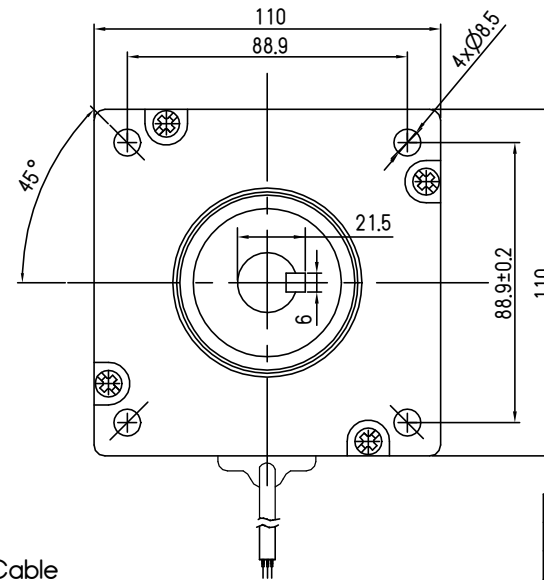
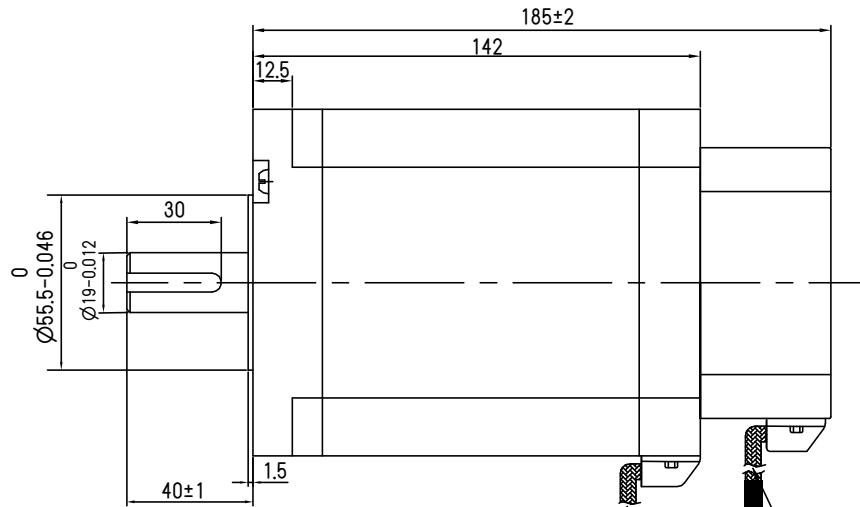


NOTES:

1. Hi-Pot: 600VAC, 1S, 2mA

REV	Description	Date	Approve
P2	Preliminary	20/02/26	ZZF

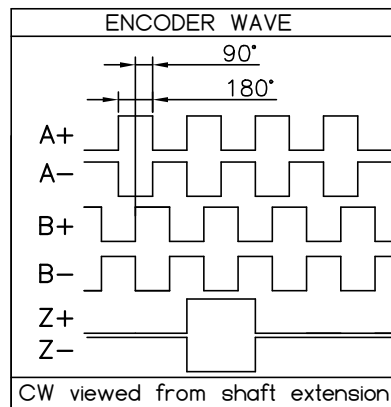


Motor Cable
4xAWG18#
L=500±50mm

Encoder Cable
16xAWG26#
L=500±50mm

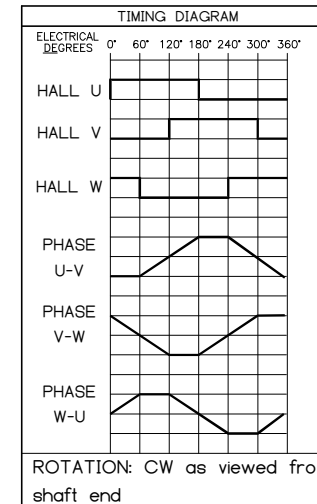
Motor Specifications	
Resistance	0.038±10% Ω
Inductance	0.18±20% mH
Voltage	48 VDC
Rated Power	1250 W
Rated Speed	3000 rpm
Rated Current	34 A
Rated Torque	4 Nm
Peak Current	100 A
Peak Torque	12 Nm
Ke (RMS)	9.3 V/Krpm
Rotor Inertia	7.60E-4 Kg.m ²
Number of Poles	8
Weight	7.58 Kg

ENCODER SPECIFICATIONS	
Voltage	5±5 VDC
Current	200 mA
Frequency	0-300 KHz
Working Temp	-20°C-100°C
Revolution	2500 ppr



MOTOR CONNECTIONS		
PIN	COLOR	SIGNAL
1	YEL	R
2	GRN	S
3	BLU	T
4	YEL/GRN	GROUND

ENCODER CONNECTIONS	
COLOR	SIGNAL
BLK	GND
RED	+5V
GRN	A-
RED	A+
GREY/WHT	B-
GREY	B+
YEL/WHT	Z-
YEL	Z+
BRN/WHT	U-
BRN	U+
ORG/WHT	V-
ORG	V+
CYAN/WHT	W-
CYAN	W+



Dept.	Technical reference	Created by	Approved by
		Document type	Document status
		Title	SERVO MOTOR
		SV110AS-03	Rev. Date of issue Sheet