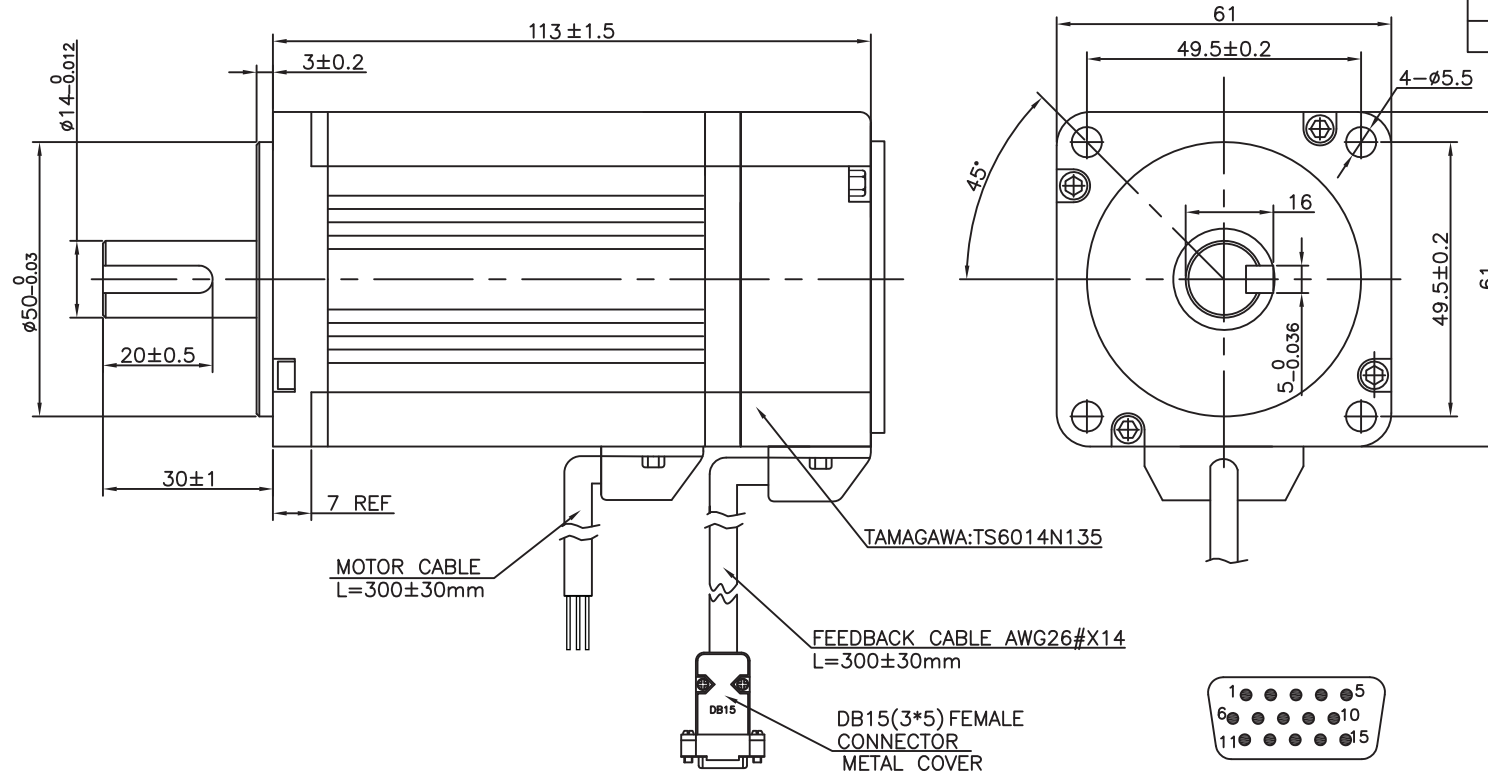


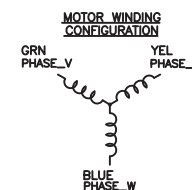
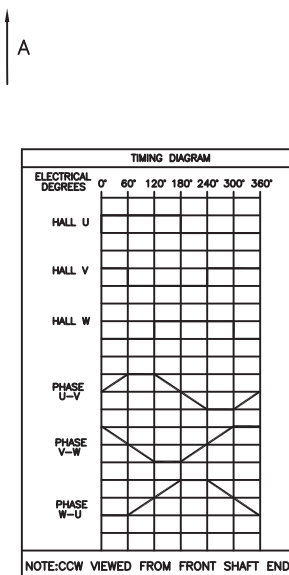
REV	DESCRIPTION	DATE	APPROVE
P1	PRELIMINARY	19/11/25	QYJ
P2	PRELIMINARY	19/12/04	QYJ



ENCODER SPECIFICATION	
VOLTAGE	+5VDC±5%
CURRENT	<60mA
FREQUENCY	0~300khz
TEMPERATURE	-30~105°C
ENCODER	2500PPR
OUTPUT WAVEFORMS	
ROTATION:CCW AS VIEWED FROM SHAFT END	

ENCODER CONNECTIONS		
PIN	COLOR	SIGNAL
1	BLU	A+
2	GRN	B+
3	BLK	GND
4	GAY	W+
5	BRN	U+
6	BRN/BLK	U-
7	YEL	Z+
8	YEL/BLK	Z-
9	WHT	V+
10	WHT/BLK	V-
11	BLU/BLK	A-
12	GRN/BLK	B-
13	RED	+5v
14	GAY/BLK	W-
15	/	/

MOTOR PARAMETERS @25°C		
	UNITS	VALUE
Supply Voltage(reference) (Vs)	VDC	36
Rated Continuous Torque (Tcr)	Nm	0.53
Rated Speed at Cont.Torque (Scr)	R.P.M.	4000
Rated Continuous Stall Current (Ics)	A	9.84
Rated Continuous Output Power (Po.c)	W	223
Motor Constant (Km)	Nm/√w	0.0998
Torque Constant (KT)	Nm/A	0.0573
Voltage Constant (KE)	Vrms/krpm	6.0
Terminal Resistance (Rmt)	ohms	0.33
Inductance (L)	mH	0.35
Rated Peak Current (Ipr)	A	30.78
Rated Peak Torque (Tpr)	Nm	1.69
Coulomb Friction Torque (Tf)	Nm	0.017
Insulation Class	F	
Rotor Inertia (Jr)	Kg.m <sup>2</sup>	0.15
Motor Weight (Wm)	Kg	1.08
Feedback Device		2500p/rev



MOTOR CONNECTIONS		
	COLOR	SIGNAL
1	YEL	U
2	GRN	V
3	BLUE	W
4	YEL/GRN	GND

NOTE: THIS DRAWING HAS BEEN CREATED BY AUTOCAD. MANUAL REVISIONS ARE NOT ALLOWED.

MATERIAL		TOLERANCE UNLESS OTHERWISE SPECIFIED ISO 2768-1 MEDIUM			
DRAWN XXX	CHECKED XXX	APPROVED - DATE	FILENAME N/A	DATE XXX	SCALE N/A
			BRUSHLESS SERVO MOTOR		
			SV060AS-02		SHEET 1/1

This drawing and the information disclosed herein are proprietary data of Mach Motion Products, and is to be immediately returned upon request. Reproduction of this drawing or the information contained herein is prohibited without the expressed written approval of Mach Motion Products.