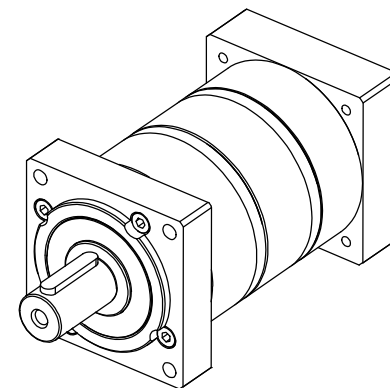


### SPECIFICATIONS

Stage	2				
Gear Ratio	i	15:1	25:1	30:1	50:1
Rated Output torque	Nm	40	48	40	32
Moment of Inertia	$g\text{-cm}^2$	120	70	120	70
Torsional Stiffness	Nm/arcmin	2.2			
Max output torque	Nm	2.5 times of Rated Output Torque			
Max radial load	N	1200			
Max axial load	N	1050			
Max input speed	RPM	10000			
Backlash	arcmin	$\leq 12$ (standard)   $\leq 6$ (precision)			
Noise level	dB(A)	$\leq 62$			
Operating temp.	$^{\circ}\text{C}$	-25~90			
Lifetime	Hrs	20000			
Efficiency	%	$\leq 96$			
Protection Level		IP64			
Mounting Position		Any			
Weight	Kg	1.6			
Tightening Clamp Torque	N.m/in-lbs	3.92/34.71			

#### NOTES:

Unless Otherwise Specified  
 All Angles  $\pm 0.5^{\circ}$   
 Break All Edges 0.2mm-0.8mm  
 Decimals .X  $\pm 0.2$  / .XX  $\pm 0.05$   
 T.I.R  $\square 0.05$   $\square 0.05$   $\square 0.05$



Unit: mm	Technical reference Scale: 1:1.5	Approved by	
		Document type	Document status
		Title <b>MPS60-XXX-20</b>	
		<b>GEARBOX</b>	
		Rev.	Date of issue
		Sheet	