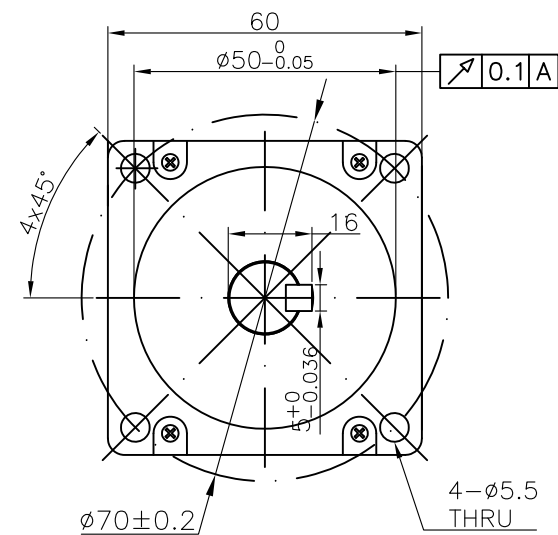
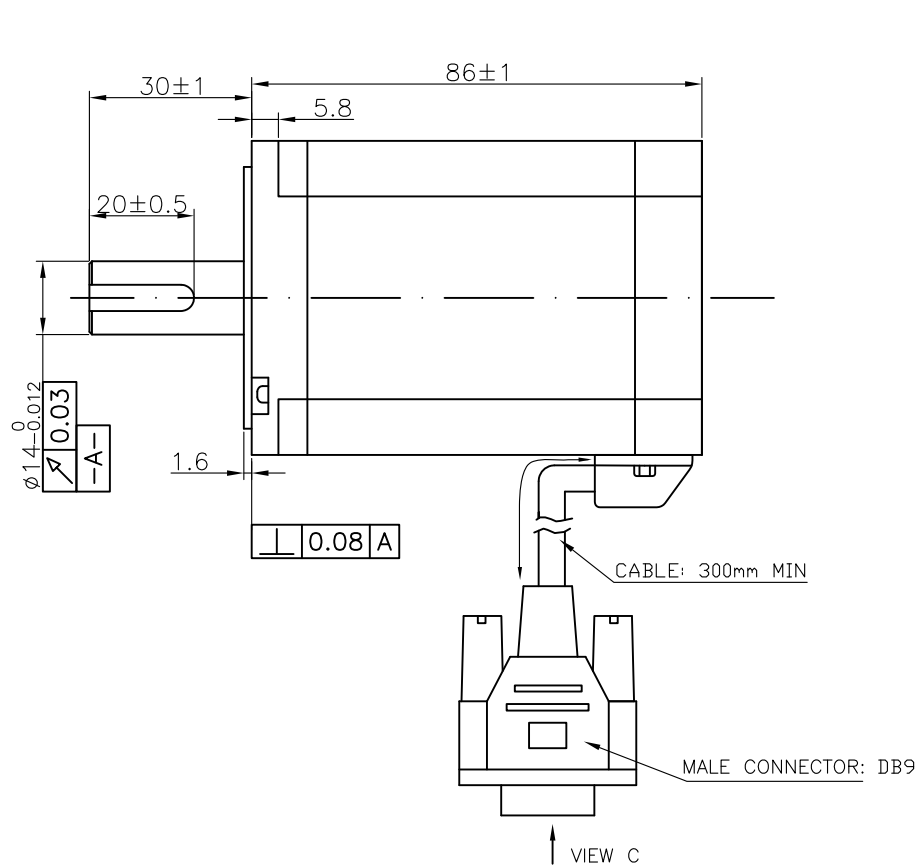
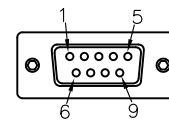


NOTE:
1. HI-POT: 600VDC,1S,2mA

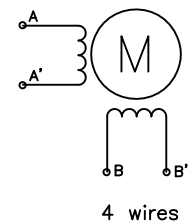
REV	DESCRIPTION	DATE	APPROVE
P1	PRELIMINARY	16/03/28	WDP
P2	PRELIMINARY	20/10/09	WDP




MOTOR PARAMETERS			
	UNITS	TOLERANCE	VALUE
STEP ANGLE	°		1.8
ACCURACY			±5%
HOLDING TORQUE	Nm	Min	3.1
RATED CURRENT	A/ph		2.8
PHASE RESISTANCE	Ohms	±10%	1.5
PHASE INDUCTANCE	mH	±20%	6.8
DETENT TORQUE	Nm	Max	0.17
ROTOR INERTIA (Ja)	gcm ₂		840
WEIGHT	kg		1.4
INSULATION CLASS			B



CONNECTIONS	
PIN	SIGNAL
6	B
7	B'
8	A
9	A'



NOTE: THIS DRAWING HAS BEEN CREATED BY AUTOCAD. MANUAL REVISIONS ARE NOT ALLOWED.

MATERIAL			TOLERANCE UNLESS OTHERWISE SPECIFIED ISO 2768-1 MEDIUM		
DRAWN XXX	CHECKED XXX	APPROVED - DATE XXX - 00/00/00	FILENAME XXX	DATE 00/00/00	SCALE N/A
 Mach Motion Products		STEPPING MOTOR			
		ST24-1.8-439-2.8			
					SHEET 1/1