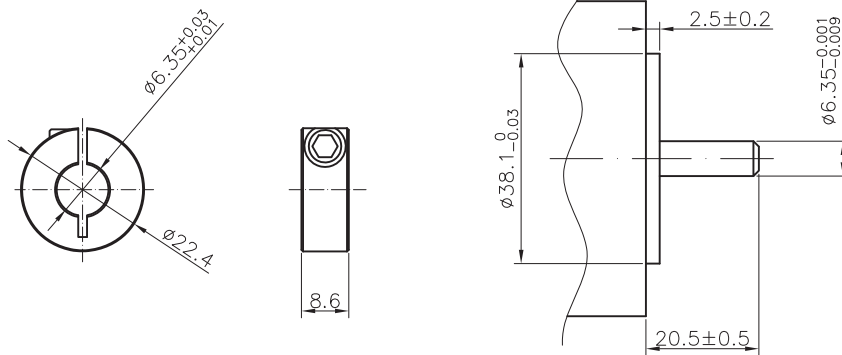


NOTE:


- 1, VOLTAGE: 24VDC
- 2, STATIC TORQUE: 0.34Nm Min.
- 3, RATED CURRENT: 0.27A
- 4, POWER: 6.4W
- 5, RESISTENCE: 88 Ohms
- 6, START VOLTAGE: 15VDCMAX.
- 7, HI-POT: 500VAC/1S, 2mA
- 8, POWER OFF BRAKE
- 9, OFFER AN FIXED SCREW M3X10 WITH THE BRAKE
10. Max Radial Load: 60 N

This drawing and the information disclosed herein are proprietary data of Mach Motion Products, and is to be immediately returned upon request. Reproduction of this drawing or the information contained herein is prohibited without the expressed written approval of Mach Motion Products.

MOTOR INTERFACE:



NOTE: THIS DRAWING HAS BEEN CREATED BY AUTOCAD. MANUAL REVISIONS ARE NOT ALLOWED.

MATERIAL			TOLERANCE UNLESS OTHERWISE SPECIFIED ISO 2768-1 MEDIUM		
DRAWN ZQY	CHECKED	APPROVED - DATE	FILENAME	DATE xx/xx/xx	SCALE N/A
			BRAKE		
			MBC023-24-005		
				SHEET 1/1	